



Fully Automatic  
Blood Cell Counter  
Dual Chamber



Symbol Of Trust  
The Most Affordable  
Quality Analytical  
Instruments  
And Consumables On  
The Earth...  
3 Years Warranty\*

\* Terms & Conditions Apply

# HEMA 3210

- Low Consumption reagent • 3 -part differential hematology analyzer : 18 parameters + 3 histograms
- 2 counting modes : whole blood pre diluted • Broad range voltage : 85-250V

Analytical Technologies Limited  
[www.analyticalgroup.net](http://www.analyticalgroup.net)

# HEMA 3210

## General Technical Specifications

### Parameters

WBC, LYM, MO, GRA, LYM%, MO%, GRA%, HGB, HCT, MCV, MCH, MCHC, RDW, PLT, MPV, PDW, PCT

### Measurement Principle

Counting method : Electric impedance  
Hemoglobin : SFT optical detection

### Sample Volume

10 $\mu$ L (Prediluted) / 20 $\mu$ L (Whole blood)

### Aperture Diameter

WBC : 100 $\mu$ m  
RBC : 80 $\mu$ m

### Throughput

60 samples/hour

### Reagent consumption by test

Lyse 0.3mL  
Diluent 25mL

### Printer

Built in thermal recorder, 58mm wide paper,  
External printer optional

### Output

RS-232, 1 Parallel printer, Power Supply

### Software

Windows 98

### Display

Touch Sensitive LCD Display (STN-LCD)

### Operating Environment

Temperature 10 $^{\circ}$ C~35 $^{\circ}$ C  
Humidity 30%~80%  
Power AC220V/110V  $\pm$  10%, 50/60Hz, 150VA

### Dimension

330mm (W) x 380mm (D) x 449mm (H)

### Weight

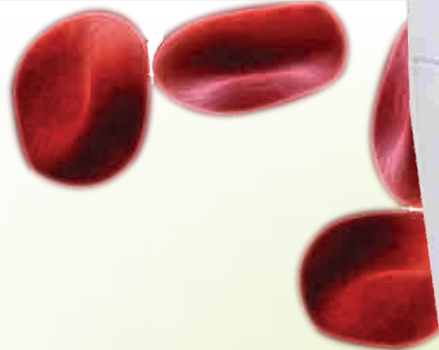
20.0 Kg

### Performance

Parameter	Precesion (CV%)	Linearity Range
WBC	<3.0%	0.0~99.9(10 <sup>3</sup> / $\mu$ L)
RBC	<2.0%	0.00~99.9(10 <sup>4</sup> / $\mu$ L)
HGB	<1.5%	0.0~30.0(g/dL)
HCT	<2.0%	
MCV	<1.5%	
MCH	<2.0%	

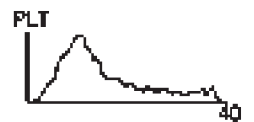
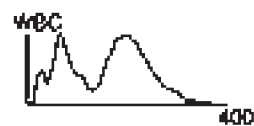


Fully



Report  
No. 00008  
2008/11/07 09:35

WBC	5.5 X 10 <sup>3</sup> /L
LY	- 1.2 X 10 <sup>3</sup> /L
MO	0.2 X 10 <sup>3</sup> /L
GR	4.1 X 10 <sup>3</sup> /L
LY%	- 21.8%
MO%	- 3.6%
GR%	+ 74.6%
RBC	4.05 X 10 <sup>6</sup> /L
HGB	135 g/L
HCT	0.454 L/L
MCV	+ 112.0 fL
MCH	33.3 pg
MCHC	- 279 g/L
RDW	+ 18.6%
PLT	148 X 10 <sup>3</sup> /L
PCT	1.34mL/L
MPV	9.1 fL
PDW	+ 18.0%



## Automatic Blood Cell Counter - Dual Chamber

## ▶▶▶ About Analytical Technologies

Analytical Technologies is the Fastest Growing Global Brand having presence in at least 96 countries across the globe. Analytical Technologies Limited is an ISO : 9001 Certified Company engaged in Designing, Manufacturing, Marketing & Providing Services for the Analytical, Chromatography, Spectroscopy, Bio Technology, Bio Medical, Clinical Diagnostics, Material Science & General Laboratory Instrumentation. Analytical Technologies, India has across the Country operations with at least 4 Regional Offices, 6 Branch Offices & Service Centers.

## ▶▶▶ Our Products And Technologies



Bio LC / Intelligent HPLC / UFLC / UPLC / nanoLC™



HEMA 2062 Fully-automatic Hematology Analyzer



NOVA 2200 Plus Auto Chemistry Analyzer



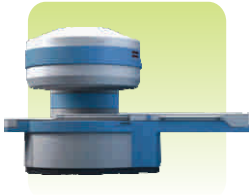
URINOVA 2800 Urine Analyzer



Fully Automated CLIA



Micro Plate Reader / Washer



MRI CT Scanner



NOVALYTE 2200 Electrolyte Analyzer



NOVA Basic Semi - Auto Chemistry Analyzer



Kidney Stone Analyzer



Amino Acid Analyzer



PCR/Gradient PCR/RT PCR



5 part Hematology Analyzer



Blood Gas Analyzer



Portable POC Blood gas Analyser



Random access analyzer for immunoassay, proteins & clinical chemistry



Revolutionary automation in neonatal screening



SPECTRO 2092



Semen Analyzer



Water Purification System



Bio Chemistry Reagents



Urine Strips



Rapid Diagnostic kits



Hematology Reagents



Analytical Group Companies  
Analytical Technologies Limited  
Analytical Bio-Technologies  
Analytical Bio- Med  
HPLC Solutions

Branch Office / Distributor

Corporate & Regd. Office :

Analytical House, # E67 & E68. Ravi Park, Opp., Sainath Park, Vasna Road, Baroda, Gujarat - 390015 INDIA.  
Tele : 0265-2253620 / 2252839 Fax : 0265-2254395 E-mail : info@hplctechnologies.com/info@ais-india.com  
Web : www.ais-india.com / www.analyticalgroup.net